

# Northern Dorset Local Action Group

## Be part of your Local Action Group

Be part of a group aiming to sustain the high quality of life in our area; improving the rural economy by supporting sustained opportunities for growth and employment.

LAG members bring their local knowledge and experience to the group and play a vital role in encouraging projects to apply alongside the oversight of the programme and its strategic direction.

Decision making powers are delegated to a sub-group - the Executive Committee, a mix of elected LAG representatives and nominees from partner organisations. Members:

- ❖ Help identify strong projects in local communities, organisations and businesses that address priorities in our rural area in line with our Local Development Strategy;
- ❖ Meet and network with other members, grant holders and local organisations;
- ❖ Monitor the performance of the Local Action Group (LAG) and discuss each year's priorities at the Spring Meeting;
- ❖ Can stand for election to the Executive Committee. Elections are held annually at the Autumn Meeting;
- ❖ Can develop new skills and knowledge of other business sectors and communities in the Southern Dorset area through visits to projects at the Summer meeting;
- ❖ Can become a Local Action Group ambassador and promote the work of the LAG in your local community; act as a 'buddy' to support new LAG members as they join.

## Who can take part?

Anyone with an interest in their local area can join. You do not have to live or work within the area but you should have knowledge and experience of the communities and types of businesses that work here. Your skills will help the LAG achieve the LEADER priority to encourage strong economic growth in rural areas. [Link to map of LAG area](#)

For example, you could be a farmer or landowner, own or work in small/micro business or social enterprise or be a representative of a local community or interest group, cultural organisation, multicultural network or youth council etc.



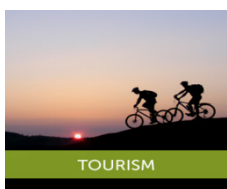
**Northern  
Dorset**  
LOCAL ACTION GROUP



**Local Action Groups** are funded under the LEADER scheme to allocate Rural Development Programme money to local businesses and communities to help them carry out projects. The projects should create jobs, help the business grow and support the rural economy. LEADER is a European funded programme.



FARMING



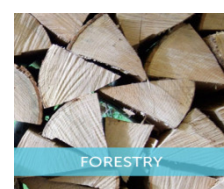
TOURISM



CULTURE AND HERITAGE



RURAL BUSINESS



FORESTRY



RURAL SERVICES

# Northern Dorset Local Action Group

## Frequently Asked Questions

### ❖ When and where can I join?

You can join at anytime until 2020. Register on-line at the website [www.dorsetleader.org.uk](http://www.dorsetleader.org.uk). Download or ask for a membership form, or join at a LAG meeting.

### ❖ How often and where will we meet?

The LAG will meet 3 times a year at different locations around the LAG area.

- Spring - monitor the programme and projects and prepare the delivery plan for the upcoming year.
- Summer - visits to projects.
- Autumn - elections for the LAG Chair and representatives to the Executive Committee as well as monitoring project progress.

### ❖ What help and support will I receive?

We hope that you will enjoy your involvement in the LAG. We will provide you with the information and knowledge you need to contribute to the successful delivery of the programme and to make well informed, fair and consistent decisions. We will provide this information in a variety of formats;

### ❖ Is there a minimum level of involvement?

You choose how much or little you want to be involved. There is a minimum requirement to attend LAG meetings and to make sure you are familiar with the priorities of the programme. You can take part in any training and information sessions relevant to you;

### ❖ Is there anything else that will be expected of me?

You need to honour our Code of Conduct for members and ensure that you declare an interest, where appropriate, when you personally know an applicant or could directly benefit from a grant being awarded.

### ❖ **LEADER Priorities**

- ❖ *support micro and small businesses and farm diversification*
- ❖ *support rural tourism*
- ❖ *increase farm productivity*
- ❖ *increase forestry productivity*
- ❖ *provide rural services*
- ❖ *provide cultural and heritage activities*



The European  
Agricultural Fund for  
Rural Development:  
Europe investing in  
rural areas

For more information contact:

James Roberts, Dorset LEADER Programme Support Officer

Phone: 01305 225525

E-mail: [j.a.roberts@dorsetcc.gov.uk](mailto:j.a.roberts@dorsetcc.gov.uk)

Website: [www.dorsetleader.org.uk](http://www.dorsetleader.org.uk)

Supported by

**Dorset County Council**



Dorset County Council acts as the Accountable Body for the LAG, employing staff and ensuring the requirements of the National Operating Manual are met.